



WORLD'S BEST
ALLOY BULLBARS

East Coast Bullbars (ECB Pty Ltd)

Tel: 07 3897 5700

Fax: 07 3283 1168

ecb@ecb.com.au www.ecb.com.au

29 Snook St
Clontarf QLD 4019
Australia

Po Box 122
Margate QLD 4019
Australia

NBMB49SY

REPLACES: 00.00.00

REVISED: 14.03.12

FITTING INSTRUCTIONS

MERCEDES VITO 02-11 ON NUDGE BAR VEHICLE FRONTAL PROTECTION SYSTEM (VFPS) FOR AIR BAG & ADR COMPLIANT VEHICLES

Check installation hardware before commencing.

Special tool requirements: T25 and T30 driver bits with driver attachment.

1. Lift bonnet
2. Remove three T25 torx head screws from top of grille. Gently remove grille if removable. On some vehicles, grille is part of bumper.
3. Remove two T25 torx head screws from top of bumper beside headlight, two T25 torx head screws from grille opening (from front on non removable grille) and two plastic push pull clips per side from bumper underside into guard liner. Pull guard liner away from bumper to access two T30 torx head screws in bumper wing into guard per side. Slide bumper forward to remove.
4. Remove one 10mm head bolt from air vent under crash can and one T25 torx screw on top of crash can into radiator support, on drivers side only. **See figure 1.**
5. On drivers side: Place ECB steel mount behind bumper support to the inside of crash can as high as possible. **See figure 2.** Mark and drill hole on the inside of the crash can. **See figure 3.** At point directly under drilled hole on underside of crash can, drill second hole and enlarge to accept 3/8 bolt and washer. **Blow filings clear and treat all exposed metal with a rust inhibitor.** Fit 3/8 x 1 1/4 bolt on wire, flat washer, spring washer and nut to pre drilled hole. **Finger tighten only.** Cut off wire tails and crimp onto crash can.
6. On passengers side: Enlarge existing hole in front of crash can to accept 3/8 bolt and washer.. **See figure 4.** Place ECB steel mount behind bumper support to the inside of crash can as high as possible. Mark and drill hole on the inside of the crash can. **Blow filings clear and treat all exposed metal with a rust inhibitor.** Fit 3/8 x 1 1/4 bolt on wire, flat washer, spring washer and nut. Cut off wire tails and crimp onto crash can. **See figure 5.**
7. Measure 90mm from end cap of crash can inside edge across bumper support toward inside of vehicle. Transfer measurement up to inside of opening in front of bumper support. **See figure 6.** Check to see that it is in line with the ECB steel mount hole, centre punch and drill to 10mm. Fit 3/8 x 1 1/2 bolt, flat washer, spring washer and nut (supplied). Align ECB mounts central to vehicle. **Tighten all bolts.**
8. Refit air vent on RH crash can.
9. Refit bumper and grille in the reverse steps of step 2 and 3.
10. Fit ECB protection bar outside of ECB steel mounts using four 1/2 x 1 1/2 bolts, flat washer, spring washers and nuts. **Finger tighten only.**
11. Align ECB protection bar to vehicle. **See figure 7 and 8. Tighten all bolts.**



WORLD'S BEST
ALLOY BULLBARS

East Coast Bullbars (ECB Pty Ltd)

Tel: 07 3897 5700

Fax: 07 3283 1168

ecb@ecb.com.au www.ecb.com.au

29 Snook St
Clontarf QLD 4019
Australia

Po Box 122
Margate QLD 4019
Australia

ENSURE NUMBER PLATE IS CLEARLY VISABLE

Note: When fitting/refitting the licence plate to the vehicle, ensure there is no obstruction to licence plate vision in accordance with local authorities. If required relocate licence plate to an alternate location.

Further VFPS Notes:

- a) Do not attach VFPS to the vehicle using anchorages not intended for this purpose (e.g. engine mounting bolts).
- b) Do not use this product for any vehicle make or model, other than those specified by the VFPS manufacturer.
- c) Do not remove the plaque or label from the VFPS.
- d) Do not modify the structure of the VFPS in any way.
- e) No accessory or fitment should project forward of the VFPS forward profile.
- f) **ENSURE THESE INSTRUCTIONS ARE LEFT WITH VEHICLE OWNER AND/OR OPERATOR.**

IMPORTANT INFORMATION

Periodically check bolts and nuts for correct tightness, especially if travelling on rough roads

FITTING KIT

1 – pair ECB Steel mounts	4 – 3/8 nuts
2 – 3/8 x 1 ¼ bolts and washer on 200mm wire	4 – ½ x 1 ½ bolts
2 – 3/8 x 1 ½ bolts	8 – ½ flat washers
4 – 3/8 flat washers	4 – ½ spring washers
4 – 3/8 spring washers	4 – ½ nuts

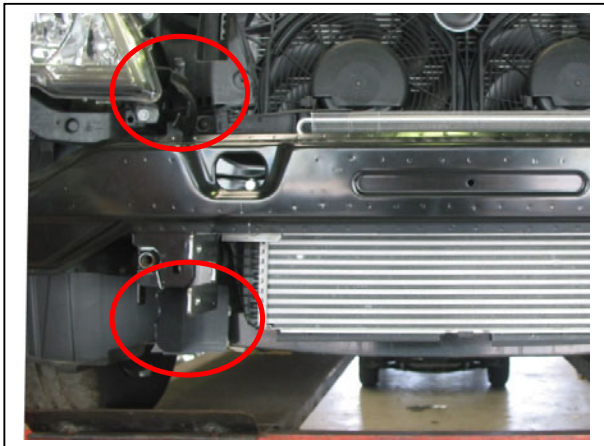


Figure 1: Positioning of air vents to be removed.

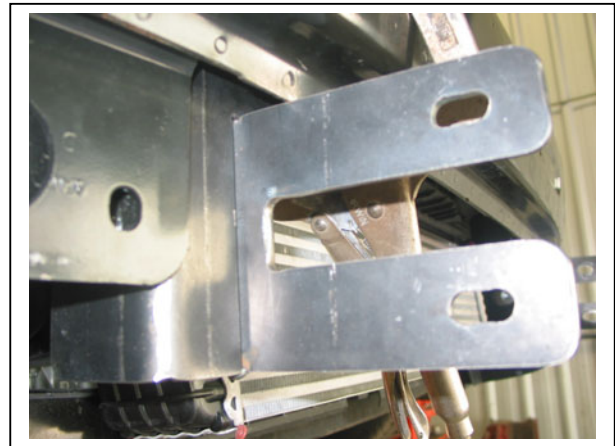


Figure 2: Placement of ECB steel mount. Drivers side shown. Pull forward as far as possible.



East Coast Bullbars (ECB Pty Ltd)

Tel: 07 3897 5700

Fax: 07 3283 1168

ecb@ecb.com.au www.ecb.com.au

WORLD'S BEST
ALLOY BULLBARS

29 Snook St
Clontarf QLD 4019
Australia

Po Box 122
Margate QLD 4019
Australia

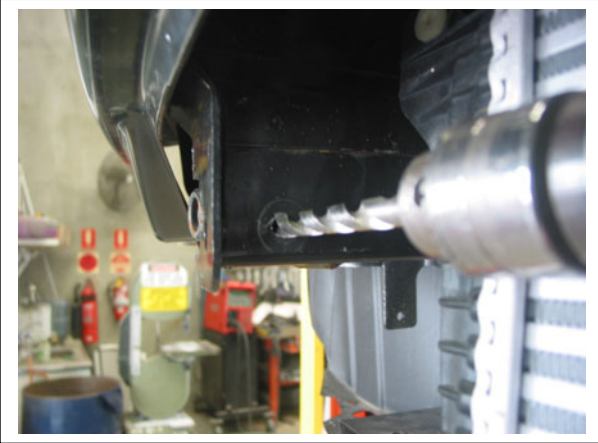


Figure 3: Mark and drill inner crash can to 10mm

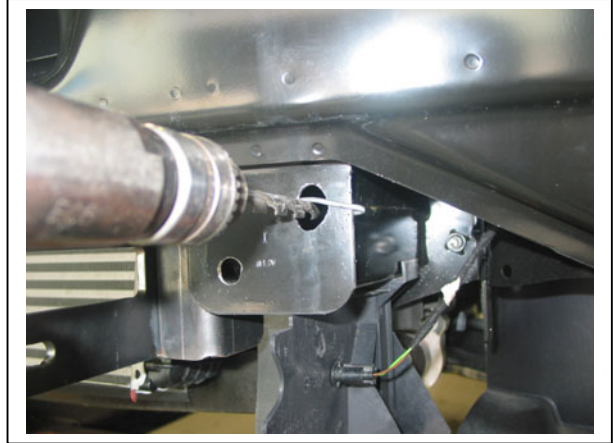


Figure 4: Enlarge hole in front of chassis rail



Figure 5: Cut and crimp wire to side of opening

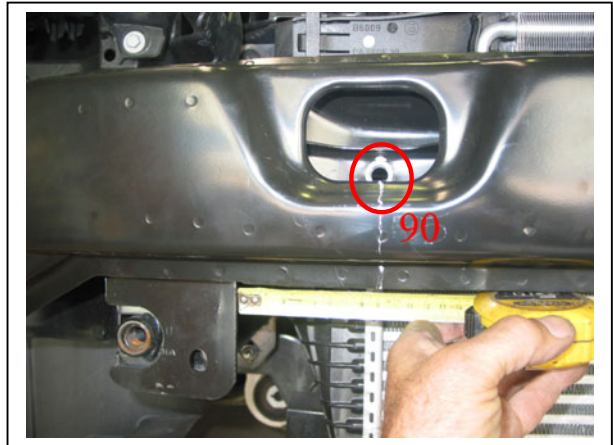


Figure 6: measure to 90mm and project up into opening. **Note:** hole has been drilled in picture.



Figure 7: Front view



Figure 8: Side view



**WORLD'S BEST
ALLOY BULLBARS**

East Coast Bullbars (ECB Pty Ltd)

Tel: 07 3897 5700

Fax: 07 3283 1168

ecb@ecb.com.au www.ecb.com.au

29 Snook St
Clontarf QLD 4019
Australia

Po Box 122
Margate QLD 4019
Australia

We value your comments

Dear Fitter,

ECB would like to know how you went with the installation of this product. We value your comment and may need to contact you to clarify some details so please complete your contact details clearly.

We would appreciate if you could complete as many of the following details as possible.

Your Name:	Your contact No.
Product Part No.	Product Invoice No.
Product Description:	Make, model, and year of vehicle:
Product Work Order No.	Company your from/Company product purchased from:

Date of Fitment: ____/____/____

Was the fitting hardware supplied complete?

Yes

No

If no what was not supplied

Did the installation go well?

Yes

No

Please provide comments

Please draw diagrams if you need to.

Post to
Reply Paid 122
PO Box 122
Margate QLD 4019

Fax to
(07) 3283 1168



WORLD'S BEST
ALLOY BULLBARS

East Coast Bullbars (ECB Pty Ltd)

Tel: 07 3897 5700

Fax: 07 3283 1168

ecb@ecb.com.au www.ecb.com.au

29 Snook St
Clontarf QLD 4019
Australia

Po Box 122
Margate QLD 4019
Australia

DESPATCH CHECKLIST NBMB49SY

Work Order #	
Finish:	
Transport:	
Due Date:	

- 1 – Pair Steel mounting brackets.
- 1 – Bolt Kit.

**See other side off
this page for
photos of all
mounts**



Is this product “the best it can be” Yes _____/_____
Wrapper's initials / Checker initials
 If NO fix before continuing

All parts checked and completed by:

Nut and bolts: _____ Date ___/___/___

Order control: _____ Date ___/___/___

Final wrap check: _____ Date ___/___/___



WORLD'S BEST
ALLOY BULLBARS

East Coast Bullbars (ECB Pty Ltd)

Tel: 07 3897 5700

Fax: 07 3283 1168

ecb@ecb.com.au www.ecb.com.au

29 Snook St
Clontarf QLD 4019
Australia

Po Box 122
Margate QLD 4019
Australia

